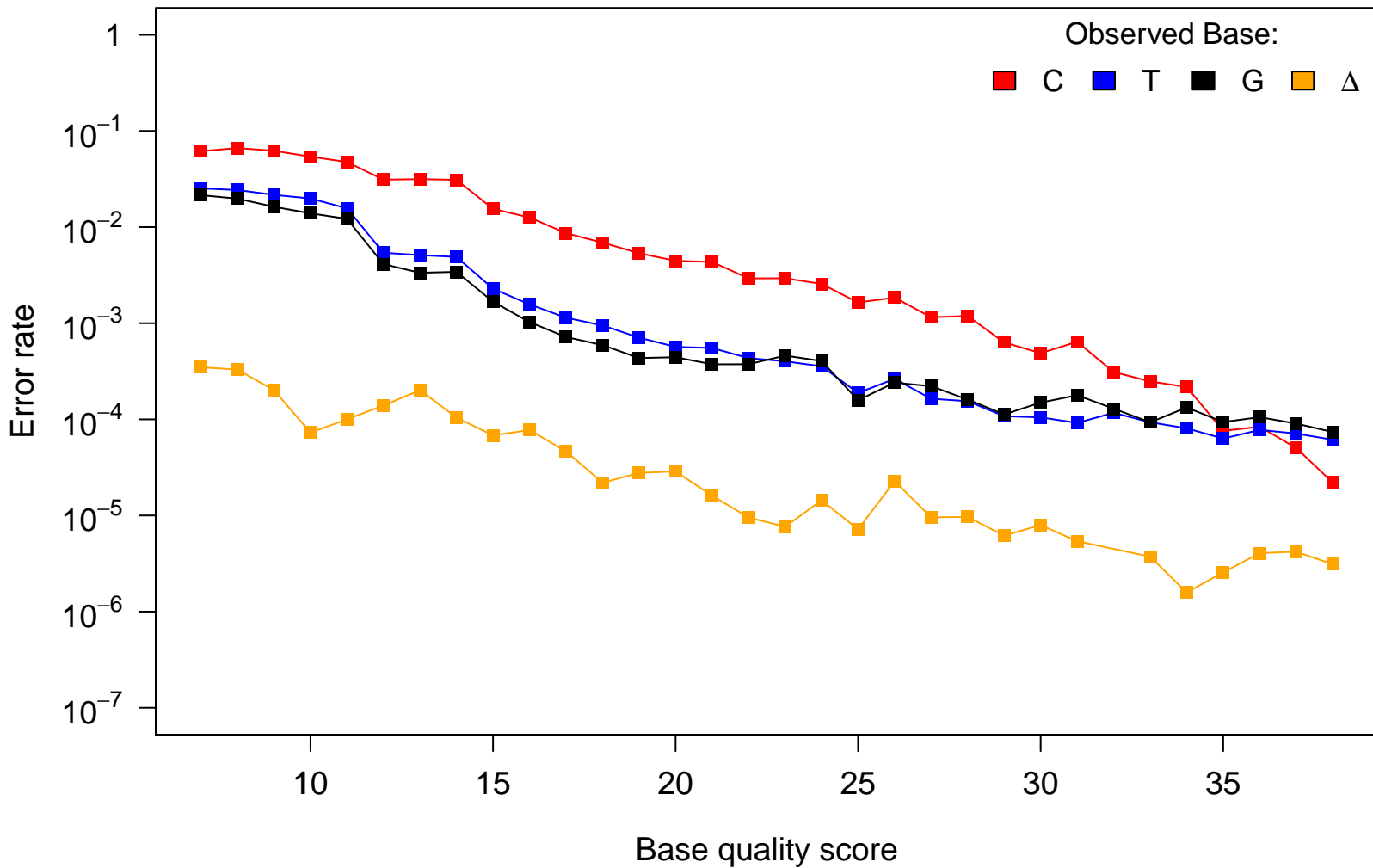


# Reference Base: A

Observed Base:

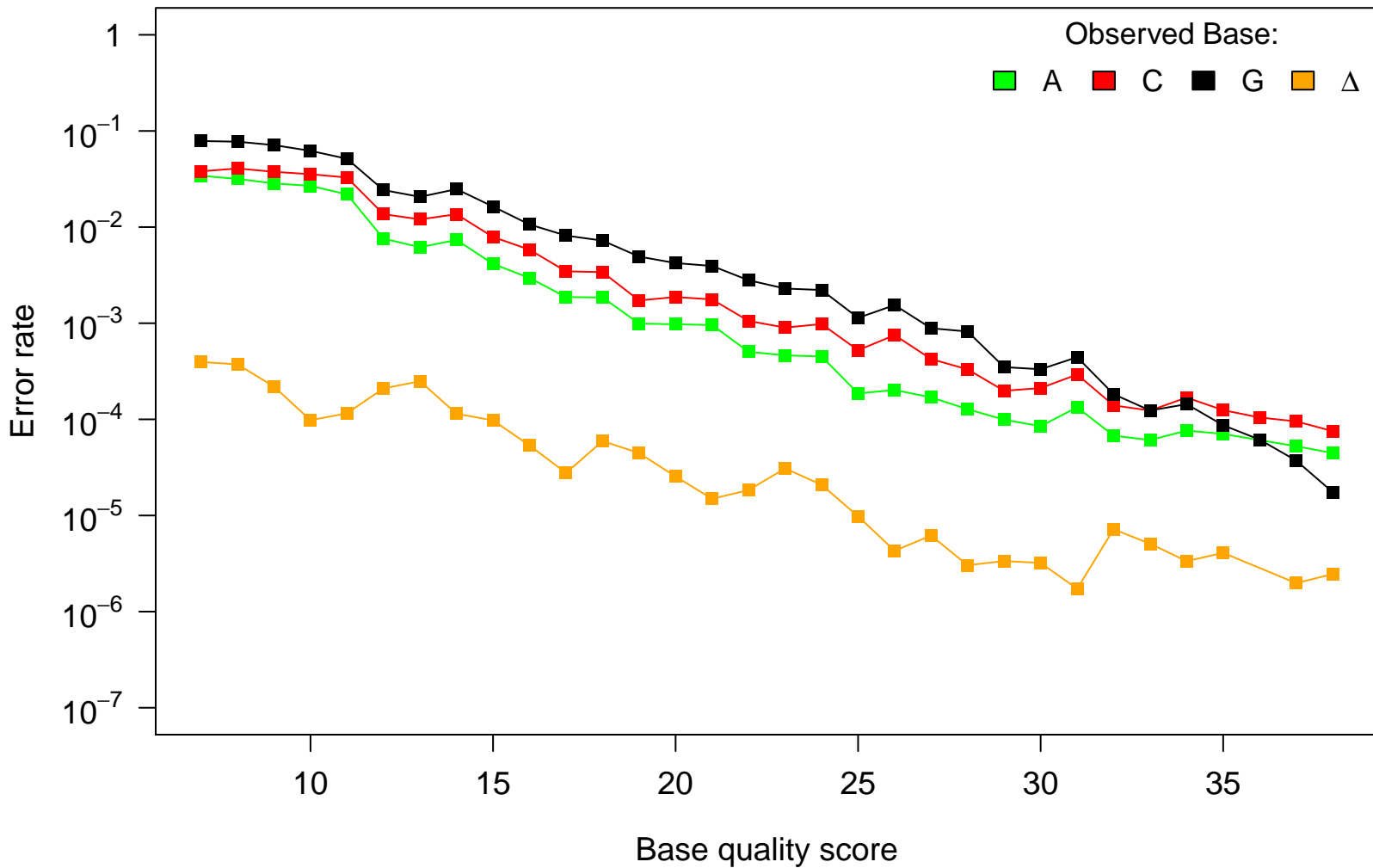
■ C ■ T ■ G ■ Δ



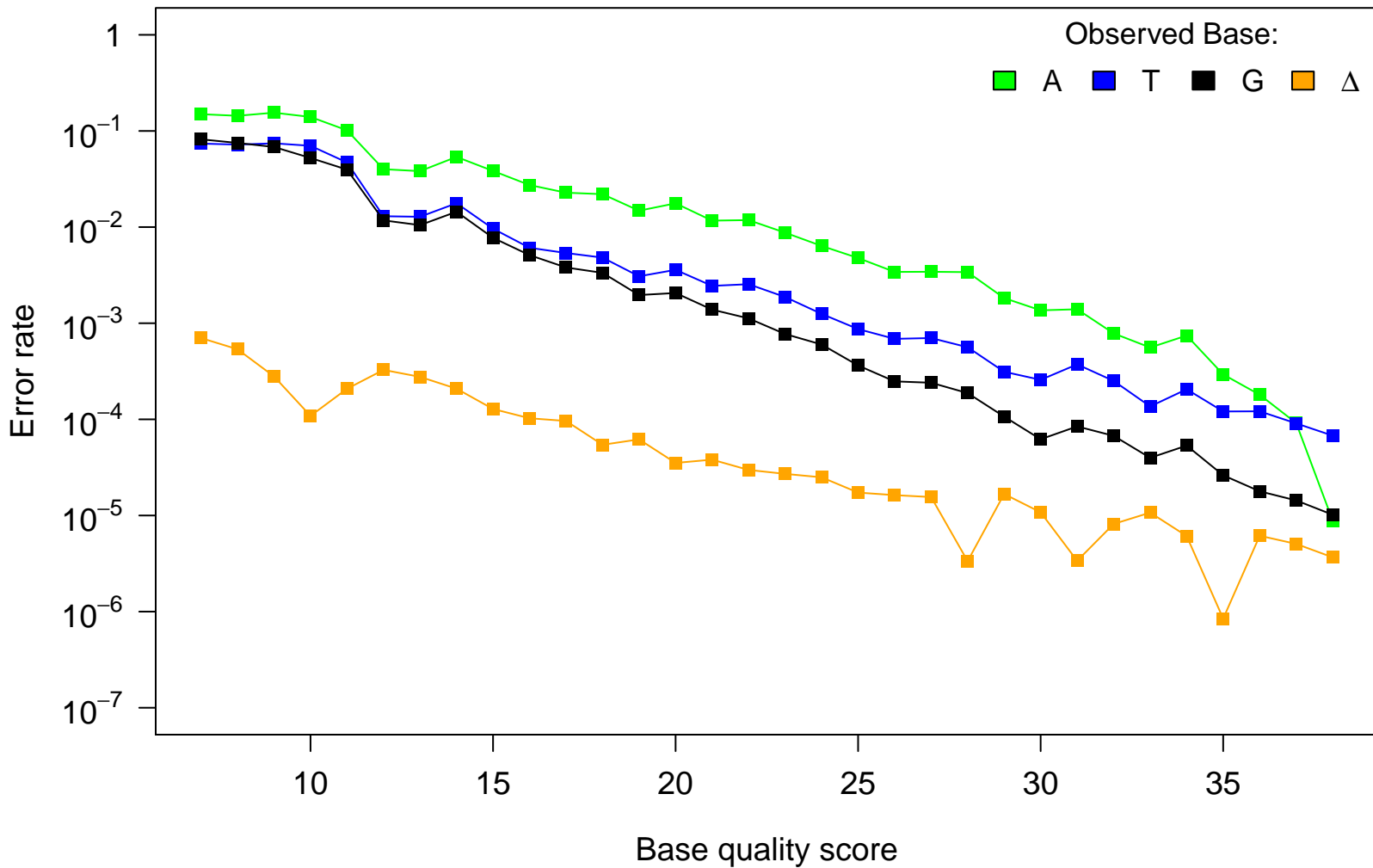
# Reference Base: T

Observed Base:

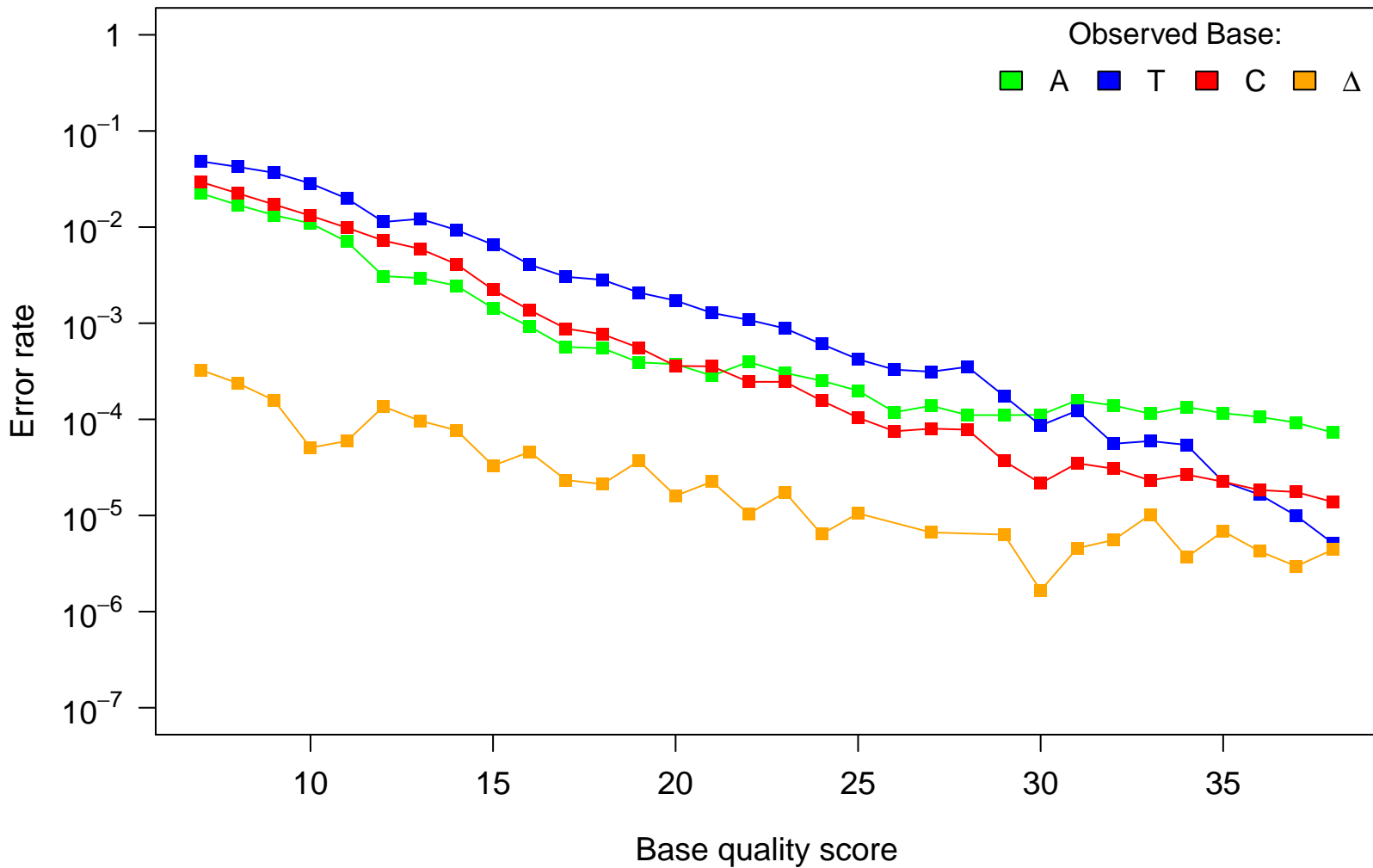
■ A ■ C ■ G ■ Δ



# Reference Base: C



# Reference Base: G



Reference Base:  $\Delta$

Observed Base:

■ A ■ T ■ C ■ G

Error rate

Base quality score

